


Holland  America

South America & Antarctica

NOVEMBER 2026-MARCH 2027 CRUISES



Contents

TOP REASONS TO CRUISE SOUTH AMERICA & ANTARCTICA WITH US	2
ICONIC SITES OF SOUTH AMERICA	3
WILDLIFE & WATERWAYS: SCENIC SOUTH AMERICA	4
SOUTH AMERICA'S UNESCO SITES	5
 27- OR 30-DAY LEGENDARY AMAZON EXPLORER	6
AWE-INSPIRING ANTARCTICA	7
22-DAY SOUTH AMERICA & ANTARCTICA	8
14- OR 15-DAY SOUTH AMERICA PATHWAYS	9
CROSS THE PANAMA CANAL OFF YOUR BUCKET LIST	10
16-DAY PANAMA CANAL & INCA DISCOVERY	11
GALÁPAGOS ISLANDS OVERLAND ADVENTURE	12
MACHU PICCHU OVERLAND ADVENTURE	13
COLLECTORS' VOYAGES	14
MEET OOSTERDAM	15
YOUR HOME AWAY FROM HOME	16
DINING, BARS & LOUNGES	17
DESTINATION DINING™: FRESH LOCAL INGREDIENTS	18
ACTIVITIES DAY & NIGHT	19
THE ULTIMATE SPA EXPERIENCE	20
HAVE IT ALL EARLY BOOKING BONUS	21
TERMS & CONDITIONS	22



Top Reasons

TO CRUISE SOUTH AMERICA & ANTARCTICA WITH HOLLAND AMERICA



HARD-TO-REACH DESTINATIONS

Cruise the Amazon River, visit the Falkland Islands, sail the Antarctic Peninsula, or spend four hours on land in Antarctica.



SPECTACULAR SCENIC CRUISING

Sail the Chilean Fjords, Glacier Alley, or Pío XI Glacier (Brüggen Glacier), the Southern Hemisphere's largest outside Antarctica.



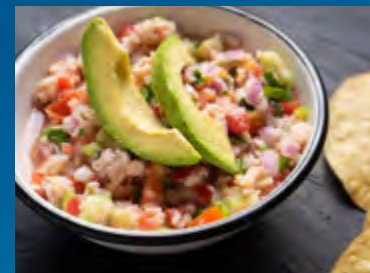
MULTIDAY OVERLAND TOURS

Spend up to seven days on land exploring Machu Picchu, the Galápagos Islands, or Torres del Paine National Park.



AUTHENTIC CULTURAL EXPERIENCES

Stroll the grounds of an Ecuadorian coffee farm, browse a Peruvian fish market, or meet a real Chilean *huaso* (cowboy).



ONBOARD DESTINATION DINING™

Enjoy fresh, locally sourced specialties such as Chilean salmon, stuffed *empanadas*, and world-renowned wines.



AWARD-WINNING, PERSONALIZED SERVICE

Awarded "Best Service" by Cruise Critic for three years running, our crew's dedication ensures every moment is filled with care.



Iconic Sites

OF SOUTH AMERICA



GALÁPAGOS ISLANDS

Marvel at this volcanic archipelago's untouched landscapes, colorful native plants, and one-of-a-kind ecosystem — home to a bounty of endemic wildlife found nowhere else on planet Earth.



MACHU PICCHU

Immerse yourself in the timeless history and intangible magic of southern Peru's "Lost City of the Incas," with its steep stone terraces, intricate construction, and awe-inspiring natural splendor.



TORRES DEL PAINE NATIONAL PARK

Discover the best of Chilean Patagonia's glacial lakes, granite spires, windswept plains, and diverse wildlife on our in-depth 6-day overland tour of Torres del Paine National Park and Perito Moreno Glacier.



IGUAZÚ FALLS

Experience this mesmerizing spectacle of crashing waterfalls, emerald-green forests, enchanting wildlife, and ever-present rainbows on an unforgettable shore excursion from Buenos Aires.

Wildlife & Waterways

SCENIC SOUTH AMERICA

A South America & Antarctica cruise is truly a feast for the senses — from the Amazon River's pink dolphins to Chile's Pío XI Glacier (Brüggen Glacier). Located in a secluded Patagonian recess, this grand ice giant's stark scenery, pristine wilderness, and blue-hued beauty draw adventurers and nature lovers from across the globe.



Crabeater seals, Antarctica



Amazon River



Pío XI Glacier (Brüggen Glacier)

THE SOUTHERN HEMISPHERE'S LARGEST GLACIER OUTSIDE ANTARCTICA

World's Tallest Tidewater Glacier

Some of the glacier's ice cliffs reach nearly 250 feet above the waterline, offering breathtaking views from the ship's deck.

Accessible Only by Sea

This unspoiled natural wonder is tucked away in a remote corner of Patagonian Chile's Bernardo O'Higgins National Park.

SOUTH AMERICA'S UNESCO Sites

Our 2026-2027 South America & Antarctica itineraries include 22 UNESCO World Heritage sites and UNESCO Biosphere Reserves. Designated by the United Nations Educational, Scientific, and Cultural Organization (UNESCO), this esteemed collection represents the best of human heritage and the natural world. Discover must-see landmarks ranging from Ecuador's Galápagos Islands to Chile's Valparaíso seaport.





27- OR 30-DAY LEGENDARY AMAZON EXPLORER

Sail into the heart of the Amazon rainforest on its one-of-a-kind river — home to pink dolphins, exotic birds, howler monkeys, and more

Stay overnight in Manaus and see the Amazon River and Rio Negro’s light and dark waters converge at the stunning “Meeting of the Waters”

Visit Caribbean ports en route to and from the Amazon, marveling at volcanoes, caves, and beaches in Martinique, Barbados, and Curaçao



**27-DAY
AMAZON EXPLORER**

Roundtrip Ft. Lauderdale

Volendam
Nov 25, 2026



**30-DAY
AMAZON EXPLORER**

New York to Ft. Lauderdale

Volendam
Nov 22, 2026



Amazon River

AWE-INSPIRING

Antarctica

Spend four extraordinary days cruising the “White Continent” during the Holland America Antarctica Experience. Gaze in wonder at this otherworldly landmass’s towering icebergs, massive glaciers, and pristine landscapes. See terns and petrels soaring overhead, penguins waddling along rocky shores, and massive marine mammals gliding through the sea as our onboard experts offer tips on how to get the most from this once-in-a-lifetime polar passage.



22-DAY SOUTH AMERICA & ANTARCTICA

Discover South America’s captivating capitals as you journey between Santiago and Buenos Aires. An overnight stay gives you plenty of time to explore Buenos Aires’s grand architecture, lively neighborhoods, and vibrant tango culture or venture inland to experience the raw, untamed power of Iguazú Falls — the world’s largest waterfall system as well as a UNESCO World Heritage site.



22-DAY SOUTH AMERICA & ANTARCTICA HOLIDAY*

Buenos Aires to San Antonio (Santiago)

Oosterdam
Dec 19, 2026★



22-DAY SOUTH AMERICA & ANTARCTICA*

San Antonio (Santiago) to Buenos Aires

Oosterdam
Jan 10, 2027



22-DAY SOUTH AMERICA & ANTARCTICA*

Buenos Aires to San Antonio (Santiago)

Oosterdam
Feb 1, 2027

*Exact itinerary in Antarctica will depend on permissions, ice, weather conditions, and time available. There will be no landings in Antarctica. Visits by cruise ships to the Antarctic require government approval. Holland America Line has obtained government approval for this cruise; there remains the possibility, however, that this approval could be withdrawn if a change is made in applicable governmental requirements.



Santiago, Chile



SPOTLIGHT: SANTA IN THE SOUTH POLE

Trade snow for glaciers and elves for penguins in 2026-2027 with Holland America! Delight in the Antarctic antics of Santa’s South Pole helpers and leave the cooking and cleaning to us while you savor sumptuous holiday meals, enjoy festive onboard décor, and reconnect with family and friends in the ultimate winter wonderland.

14- OR 15-DAY SOUTH AMERICA PATHWAYS: CHILEAN FJORDS & GLACIERS

Enjoy spectacular scenic cruising through the Chilean Fjords, Drake Passage, Cape Horn, Glacier Alley, and the Cockburn and Beagle Channels. Explore Torres del Paine National Park and Perito Moreno Glacier on an optional overland tour and marvel at the striking blue hues of mighty Pío XI Glacier — the Southern Hemisphere’s largest glacier outside Antarctica.



14-DAY SOUTH AMERICA PATHWAYS: CHILEAN FJORDS & GLACIERS

San Antonio (Santiago) to Buenos Aires

Oosterdam
Feb 23, 2027



15-DAY SOUTH AMERICA PATHWAYS: CHILEAN FJORDS & GLACIERS

San Antonio (Santiago) to Buenos Aires

Oosterdam
Dec 4, 2026



15-DAY SOUTH AMERICA PATHWAYS: CHILEAN FJORDS & GLACIERS

Buenos Aires to San Antonio (Santiago)

Oosterdam
Mar 9, 2027



Torres del Paine National Park, Chile



Museo de Arte Tigre, Buenos Aires, Argentina

SPOTLIGHT: BUENOS AIRES

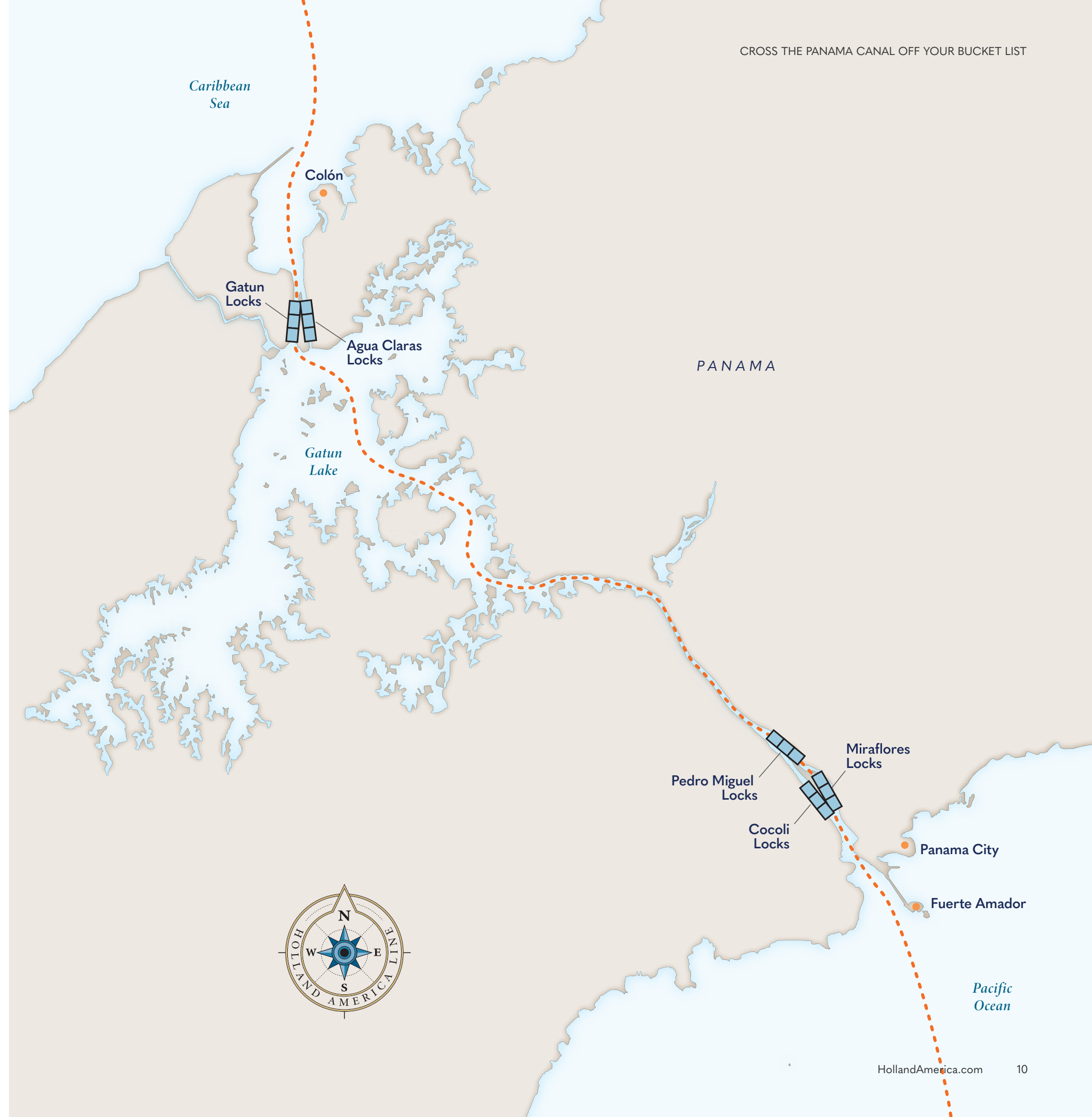
Argentina’s dynamic capital dances to a rhythm all its own. Birthplace of the scintillating tango, Buenos Aires seems to burst with passion and energy from every quaint café, sprawling green space, and lively city square. Discover Buenos Aires for yourself on one of our fascinating shore excursions, taking in its mosaic of unique neighborhoods, world-class restaurants, and old-world ambience mixed with South American flair.

CROSS THE Panama Canal OFF YOUR BUCKET LIST

Our *Panama Canal & Inca Discovery* cruises include a transit of all three of the Panama Canal's historic locks:

- The **Miraflores Locks** are the closest to Panama City and the Pacific Ocean. After entering the locks, you'll feel their two chambers raise the ship 54 feet above sea level to Lake Miraflores and watch the cement walls rise as the water falls away beneath you
- Next are the **Pedro Miguel Locks**, whose single chamber raises the ship 31 feet up to Lake Gatun
- The **Gatun Locks** are the closest to the Atlantic Ocean and feature three chambers that lower the ship a total of 85 feet back to sea level

The variety of birds and wildlife in the surrounding forest, as well as the feat of engineering that is the canal itself, make for a unique experience best undertaken by sea.



16-DAY PANAMA CANAL & INCA DISCOVERY

Experience an engineering marvel, call on charismatic capitals, and embark on an optional multiday journey to the Galápagos Islands, Machu Picchu, or both. With convenient departures and arrivals from Ft. Lauderdale, these itineraries make it easy to transit the Panama Canal and dive deeply into Fuerte Amador (Panama City) and Callao (Lima)'s unique cultures and distinctive local charm during overnight stays.



16-DAY PANAMA CANAL & INCA DISCOVERY

Ft. Lauderdale to San Antonio (Santiago)

Oosterdam
Nov 18, 2026



16-DAY PANAMA CANAL & INCA DISCOVERY

San Antonio (Santiago) to Ft. Lauderdale

Oosterdam
Mar 24, 2027



SPOTLIGHT: LIMA

Colonial meets contemporary in Peru's vibrant capital of Lima, with its innovative restaurants, thriving art galleries, and historic city center — a UNESCO World Heritage site. For those looking to venture further afield, the nearby port city of Callao serves as your gateway to the Galápagos Islands and the "Lost City of the Incas," Machu Picchu.

Galápagos Islands

OVERLAND ADVENTURE

Leave the mainland behind as you journey to a land lost in time. Available on *Panama Canal & Inca Discovery* itineraries, our Galápagos Islands overland tours are your ticket to this pristine paradise's unparalleled wildlife. While the giant Galápagos tortoises are undoubtedly its most famous ambassadors, the region is also home to blue-footed boobies, Sally Lightfoot crabs, marine iguanas, frigatebirds, and other unique and amazing animals.



Marine iguana



Frigatebird



Sally Lightfoot crab



Galápagos tortoises



Blue-footed booby

Machu Picchu

OVERLAND ADVENTURE

Venture 7,874 feet above sea level to unravel the secrets behind this ancient citadel. Our *Panama Canal & Inca Discovery* cruises offer guests the chance to spend 3–4 days in Cusco — the former capital of the mighty Inca Empire and your gateway to Machu Picchu. Let us handle the logistics while you browse local markets, admire Spanish colonial architecture, and contemplate the Incas' impressive technical prowess while basking in this 600-year-old archaeological site's breathtaking beauty and mesmerizing mystique.



Native Peruvians



TWO CONSECUTIVE SAILINGS, ONE SEAMLESS JOURNEY

Collectors' Voyages

Experience even more of South America & Antarctica in 2026-2027 with our flexible, thoughtfully designed Collectors' Voyages. These unique itineraries combine two back-to-back sailings into one seamless journey that allows you to dive into your destination and create the perfect extended cruise vacation.

CRUISE	DAYS	SHIP	EMBARK	DISEMBARK	DEPART
 Panama Canal, Inca & South America Discovery	31	Oosterdam	Ft. Lauderdale	Buenos Aires	2026 Nov 18
 South America, Inca & Panama Canal Discovery	31	Oosterdam	Buenos Aires	Ft. Lauderdale	2027 Mar 9

31-DAY PANAMA CANAL, INCA & SOUTH AMERICA DISCOVERY

Ft. Lauderdale to Buenos Aires

Oosterdam
Nov 18, 2026

31-DAY SOUTH AMERICA, INCA & PANAMA CANAL DISCOVERY

Buenos Aires to Ft. Lauderdale

Oosterdam
Mar 9, 2027



MEET Oosterdam

1,964
GUESTS

936 ft.
LENGTH

105.8 ft.
WIDTH

Experience high style on the high seas aboard *Oosterdam*, whose gracious service, contemporary finishes, and teen and family game room make this classic beauty a hands-down favorite. This Vista Class ship is perfect for navigating South America & Antarctica's waterways with ease while holding a wealth of dining and entertainment.

2 PICKLEBALL COURTS

The first and only cruise line partner of the Professional Pickleball Association! Purchase branded starter kits, watch tutorial videos, and enjoy complimentary lessons surrounded by 360° sea views.



8 POOLS & HOT TUBS

Swim in any weather with the Lido Pool's retractable roof! You can also cool off in the outdoor Sea View Pool, unwind in the Hydropool, or relax and recharge in one of our five soothing onboard hot tubs.



6 WORLD-CLASS DINING OPTIONS

From grab-and-go choices and poolside fries to upscale restaurants and 24-hour room service, *Oosterdam* is home to a host of elegant eateries serving classic and regional cuisine to please every palate.



4 ENTERTAINMENT VENUES

Watch an innovative performance on the World Stage, rock out to the classics at Rolling Stone Lounge, sing along to your favorites at Billboard Onboard, or dance to the sounds of Third Avenue West.



LEARN MORE ABOUT
OOSTERDAM

Your Home

AWAY FROM HOME

Unpack once with ease amid our generous storage space and ensure peace of mind with our secure in-room safe. Pack as much or as little as you wish with our flexible laundry packages and leave the daily housekeeping to us while you unwind with massage shower heads, pamper yourself with Elemis Aromapure toiletries, and drift off to sleep in your Mariner's Dream™ or Duxiana® bed.

COMFORTABLE STATEROOMS

Settle into a comfortable Inside stateroom, take in sea views from an Ocean View stateroom, or spread out in a Verandah stateroom featuring floor-to-ceiling windows and (of course) a spacious, private, teak-lined verandah.

ELEGANT SUITES

Oosterdam's large Signature Suites feature an expansive sitting area, Murphy bed, additional shower stall, and more, while Neptune and Pinnacle Suites include a host of perks ranging from fresh flowers to personal concierge service.



Neptune Suite



Verandah stateroom



Attentive service



Accommodations vary by ship. Scan or click here to compare dining, activities, and other amenities across our fleet.

Dining

BARS & LOUNGES

Find everything from fresh seafood, specialty coffee, and craft cocktails to burgers, pasta, and fresh-made desserts. You can even treat yourself to breakfast in bed or a late-night snack with our complimentary 24-hour room service.

COMPLIMENTARY DINING OPTIONS

- | | |
|-------------|----------------------|
| Dining Room | Lido Market |
| Dive-In | 24-hour room service |

SPECIALTY RESTAURANTS*

- | | |
|-----------|----------------|
| Canaletto | Pinnacle Grill |
|-----------|----------------|

COFFEE & TREATS*

- Crow's Nest Café

BARS & LOUNGES*

- | | | |
|-------------------|-----------|--------------|
| Crow's Nest | MIX | Pinnacle Bar |
| Explorer's Lounge | Ocean Bar | Sea View Bar |
| Lido Bar | | |



Dining Room



Pisco Sour



Roasted Salmon

[CLICK HERE TO LEARN MORE](#)

*For a nominal fee.

Destination Dining™

FRESH LOCAL INGREDIENTS

At Holland America, our cuisine goes beyond the plate. We now offer more than 80 varieties of fresh fish sourced locally from across our worldwide network via the first-of-its-kind Global Fresh Fish Program. With native fresh fish and ingredients sourced directly from those who know them best, our Destination Dining™ tells the story of each region through its unique flavors — from Chilean salmon to Argentine Black Angus beef.

Looking for even more authentic tastes of the region? Our immersive shore excursions include a number of fun and delicious culinary tours. Visit a Chilean *pisco* distillery, browse a Peruvian farmers' market, sample authentic Argentine *empanadas*, call on an Uruguayan winery, and savor traditional Falkland Islands meats.



Purple Peruvian potatoes



Fresh guava



Locally prepared empanadas



Tai Chi



Sport Court



Billboard Onboard

Activities

DAY & NIGHT

Begin your day with a Tai Chi session, a spin class, or a walk around the Promenade Deck. Play a round of pickleball in the afternoon or try your luck in the Casino after sunset. On South America & Antarctica itineraries, learn the secrets behind some of Argentina’s signature dance moves with a tango lesson or brave the Sea View Pool’s icy waters with an Antarctic Plunge.

MUSIC CLUBS



NEW SHOWS NIGHTLY ON



SPORTS & ACTIVITIES

- | | |
|----------------------------------|-------------------------------|
| Arts & Crafts Classes | “Officer vs. Guest” Showdowns |
| Bingo | Pickleball |
| Complimentary Casino Lessons | Sports on Deck |
| <i>Deal or No Deal</i> Game Show | Tai Chi |
| Family Games | Trivia |
| Jackpot | And so much more! |

CLICK HERE TO
LEARN MORE 



Spa & Salon

THE ULTIMATE Spa Experience

Rejuvenate your senses and nourish every aspect of your well-being in the award-winning Spa & Salon. Soothe tired muscles in the Hydropool and recharge in the peaceful Thermal Suite while surrounded by spectacular sea views.

SPA SERVICES

- Acupuncture Services
- Couples' Treatments
- Facial Treatments
- Hair & Nail Services
- Massage & Body Therapies
- Medi-Spa Treatments
- Teeth Whitening
- Thermal Suite & Hydropool

WELLNESS & FITNESS

- Body Composition Analysis
- Circuit Training
- Fitness Center
- Guided Meditation
- Nutritional Consultation
- Pain Management Workshop
- Personal Training
- Sport Court



Hot Stone Massage



Fitness Center

CLICK HERE TO **LEARN MORE**



LIMITED-TIME OFFER

Early Booking Bonus Have it all.

Save up to 60% on top amenities with the Have It All Early Booking Bonus*! Enjoy all the benefits of our standard Have It All package, including Shore Excursion and Specialty Dining Credits, plus free prepaid Crew Appreciation, our Low Price Guarantee*, and free upgrades to the Elite Beverage Package and Premium Wi-Fi.



Whale tail, Antarctica

BOOK EARLY TO RECEIVE OUR BEST VALUE ON TOP AMENITIES



FREE PREPAID CREW APPRECIATION

Crew Appreciation, or stateroom gratuities, is covered for you (a value of us\$17 per day for Interior, Ocean View, and Verandah staterooms and us\$19 per day for suites) to recognize the efforts of a wide variety of crew members who contribute to the experiences of all our guests.



FREE UPGRADE PREMIUM WI-FI

Stay connected throughout your journey. Surf the web, use social media, check email, and send messages to family and friends.



FREE UPGRADE ELITE BEVERAGE PACKAGE

Choose from a large selection of wine, beer, spirits, and cocktails, plus non-alcoholic options such as sodas, coffees, and more — with service charges included.



SPECIALTY DINING

Enhance your cruise with award-winning specialty dining at Canaletto, Tamarind, or the famed Pinnacle Grill — with service charges included.



LOW PRICE GUARANTEE

If you find a lower, identical fare for your cruise before this offer expires, you are eligible to receive the difference in the form of Onboard Credit, a stateroom upgrade, or another benefit.



SHORE EXCURSIONS

The longer you cruise, the more you can explore!

- Cruise 6-9 days and receive us\$100 Shore Excursion Credit
- Cruise 10-20 days and receive us\$200 Shore Excursion Credit
- Cruise 21+ days and receive us\$300 Shore Excursion Credit

Click to see our **HAVE IT ALL EARLY BOOKING BONUS ITINERARIES**



Book Today - Limited-Time Offer

Early Booking Bonus Have it all.

Up to 3 Nights' Specialty Dining
Includes service charges; varies by voyage

Up to us\$300 Shore Excursion Credit
Varies by voyage length

FREE UPGRADE
Elite Beverage Package
Includes service charges

FREE UPGRADE
Premium Wi-Fi

FREE Prepaid Crew Appreciation
Gratuities

LOW PRICE GUARANTEE
U.S. & Canada only

See page 22 for terms and conditions.

TERMS & CONDITIONS

RESERVATIONS

Accommodations are limited. If you use a travel agent/travel agency ("TA") to book your reservation, you shall pay deposits and payments for Holland America Line's ("HAL") services to such TA. HAL will issue travel documents only if and when it has received full payment from TA. HAL will make any refunds to the applicable TA based only on the amount HAL actually received, less any applicable cancellation fees and charges; guest is responsible for obtaining any refund monies from TA.

DEPOSIT & FINAL PAYMENT REQUIREMENTS

Deposit is required at the time of cruise booking and final payment of balance must be received no later than 90 days prior to departure.

CANCELLATIONS

Our cancellation policy allows you to cancel your 2026–2027 Australia, New Zealand & South Pacific cruise 90+ days prior to departure, depending on the cruise, and receive a full refund. If you cancel your 2026–2027 Australia, New Zealand & South Pacific cruise 89 days or less prior to departure, depending on the cruise, you are required to pay a cancellation fee (including 3rd and 4th berths) as set forth below. Such fees are based on the fare paid, excluding Taxes, Fees & Port Expenses ("TFPE"), transfers, surcharges, shore and land excursions, and most pre-purchased gift(s) and/or special service(s). See more details in the Cruise Contract. For 2026–2027 Australia, New Zealand & South Pacific cruises, the cancellation fee amount varies based on the length of sailing and timing of cancellation as follows:

2026–2027 SOUTH AMERICA & ANTARCTICA — 14- TO 31-DAY CRUISES*	
Number of Days Before Sailing Date on Which Guest Cancels Cruise	Amount of Cancellation Fee
90+ days' notice	0%
89–83 days' notice	An amount equal to deposit requirement
82–46 days' notice	50% of gross fare
45 days' notice or less	100% of gross fare

*Excluding 27- or 30-Day *Legendary Amazon Explorer* sailing on November 22 or 25, 2026.

27- OR 30-DAY LEGENDARY AMAZON EXPLORER	
Number of Days Before Sailing Date on Which Guest Cancels Cruise	Amount of Cancellation Fee
120+ days' notice	0%
119–113 days' notice	An amount equal to deposit requirement
112–76 days' notice	50% of gross fare
75 days' notice or less	100% of gross fare

Change to arrangements may be subject to change charges.

CREW APPRECIATION & SERVICE CHARGES

For your convenience, Crew Appreciation will automatically be added to your onboard account to recognize the efforts of a wide variety of crew members in various departments, including those in the Dining, Entertainment, Guest Services, and Galley areas. The amount of the Crew Appreciation is based on your stateroom category and is subject to adjustment at your discretion, except as otherwise provided in the Crew Appreciation and Service Charge Policy. A Service Charge will automatically be added to optional purchases of beverage packages, drinks, dining room and specialty dining, onboard parties, and other services or amenities provided to guests that are not included in the cruise fare. The Crew Appreciation and Service Charge payments on all vessels in our fleet are pooled and distributed in the form of compensation, including bonuses. For further details, please review our Crew Appreciation and Service Charge Policy.

TAXES, FEES & PORT EXPENSES

"Taxes, Fees & Port Expenses," or "TFPE" as used by HAL, may include any and all fees, charges, tolls,

and taxes imposed on HAL by governmental or quasi-governmental authorities, as well as third-party fees and charges arising from a vessel's presence in a harbor or port. TFPE may be assessed per guest, per berth, per ton, or per vessel. TFPE are subject to change, and HAL reserves the right to collect any increases in effect at the time of sailing even if the fare has already been paid in full.

GUESTS WITH DISABILITIES

Holland America Line seeks to accommodate the needs of guests with disabilities, to the extent feasible. Some accommodations require advanced notification. For more information, visit the Accessible Cruising section of our website.

MEDICAL SERVICES

Each of our ships is equipped with limited medical facilities that are staffed by a physician and registered nurses. Unless otherwise indicated in an active HAL policy (for example, the COVID-19 Protection Program), guest will be charged a fee for all medical services and medications obtained on board. If the onboard physician is unable to care for your needs on board, you will be transferred to medical facilities on shore. If your condition will require you to have a special medical apparatus or assistance on board, we must be made aware of that at the time of booking in order to determine whether we can accommodate your needs.

PASSPORTS / VISAS / IMMUNIZATIONS

You are solely responsible for securing and having available all proper documentation for the countries visited on your cruise or land tour and for bringing all necessary travel documents such as passports, visas, proof of citizenship, re-entry permits, minors' permissions, and medical certificates showing all necessary vaccinations. Guests should check with their TA or the appropriate governmental authority to determine the necessary documents. Guest will be refused boarding or disembarked without recourse or liability for refund, payment, compensation, or credit of any kind if they do not have proper documentation, and they will be subject to any fine or other costs incurred by HAL that result from improper documentation or non-compliance with applicable regulations.

RESPONSIBILITY

All HAL vessels are owned by HAL Antillen N.V. and operated by Holland America Line N.V. in its capacity as general partner of Cruiseport Curaçao C.V. Transportation on board the ship is provided solely by the Shipowner and Operator and pursuant to the Cruise Contract that you will receive prior to embarkation. Ships' Registry: The Netherlands.

Non-Holland America Line services (for example, shore excursions) are generally performed by independent contractors. These non-Holland America Line services are solely at your risk and subject to the terms or arrangements with the independent contractor. HAL assumes no responsibility with respect to these non-Holland America Line services (including cancellation, injury, or death) even though HAL may collect monies or make bookings.

ACCURACY OF CONTENTS / GENERAL

Contents of this brochure, including terms and conditions, are subject to change at any time at the sole discretion of HAL. Please refer to HollandAmerica.com for up-to-date information. **Any advertised offer may be changed or revoked at any time.**

Situations may arise which, in our opinion, make it necessary for us to cancel, advance, or postpone a scheduled departure, change itineraries, or make substitutions involving hotels, restaurants, ports of call, other travel components, vessels, or other modes of transportation. In that event, we do not assume responsibility or liability for any resulting losses, expenses, or inconvenience. We are not required to make refunds once travel commences, regardless of the reason for guests being unable to complete their travel.

The ship names and all other trademarks, slogans, logos, and imagery used herein are, whether or not registered, owned by Holland America Line N.V.

All guests will be required to agree to the Cruise Contract and all information and terms therein.

 CALL YOUR TRAVEL ADVISOR OR
1-877-SAIL HAL (1-877-724-5425)

  CALL YOUR TRAVEL ADVISOR OR
0344 338 8605


 CALL YOUR TRAVEL ADVISOR OR
1300 987 322

**OR VISIT
HOLLANDAMERICA.COM**



HAVE IT ALL EARLY BOOKING BONUS TERMS & CONDITIONS **Have It All Early Booking Bonus Offer** ("Early Booking Bonus Offer") fare and its parts are neither transferable nor refundable and have no cash value. Early Booking Bonus Offer fares available only on select departures and exclude Grand Voyages and any cruise lasting 5 days or less. Any advertised fare may be changed or revoked at any time. Fares are subject to full terms and conditions, available at HollandAmerica.com/package-terms. **Elite Beverage Package** has a daily limit of 15 beverages. Available only for beverages priced at US\$15 or less. Must be 21+ for alcoholic beverages. Management reserves the right to revoke the package and may refuse service for any reason. The package excludes beverages purchased in The Shops, from the mini-bar, through 24-hour room service, or on Half Moon Cay. **Specialty Dining** is based on cruise duration and ship type. Dining options are determined by ship and exclude all events in Pinnacle Grill. **Shore Excursion** offer is based on cruise duration and is per person, not per stateroom. For 6- to 9-day cruises, eligible guests will receive US\$100 credit per person to apply toward their shore excursion purchase(s). For 10- to 20-day cruises, eligible guests will receive US\$200 credit per person to apply toward their shore excursion purchase(s). For 21+ day cruises (excluding Grand Voyages), eligible guests will receive US\$300 credit per person to apply toward their shore excursion purchase(s). Shore Excursion Credit must be used on corresponding cruise and is non-refundable. **Premium Wi-Fi:** All onboard Internet usage is subject to Holland America Line's ("HAL's") standard policies, which may limit or block browsing/use of some sites or applications due to network security and bandwidth usage. Offerings are subject to change without notice. Plan can be used on any device, but only one device can be actively connected at a time. Upgrades are available once on board. Offer applies to 1st/2nd guests in a stateroom only. **Low Price Guarantee:** If a guest books a HAL cruise with the Early Booking Bonus Offer (the "original booking") and such guest finds a cheaper price for an identical booking within the duration of the Early Booking Bonus Offer (the "Comparison Fare"), the difference may be compensated in the form of Onboard Credit, a stateroom upgrade, or another method. HAL reserves the sole right to determine the method of compensation made to guests. A fare will be considered a Comparison Fare only if its booking consists of details that are identical to those of the original booking (including, but not limited to, the same ship, sail dates, stateroom category, and number of guests as the original booking). A determination as to whether the located fare is identical to the original booking will be at HAL's sole discretion. HAL reserves the right to apply this price protection and offer at its discretion. Other restrictions and exclusions may apply. Holland America Line is neither responsible nor liable for any printing errors. Promotion is based on promotion code(s) N2 and based on double occupancy. Ships' Registry: The Netherlands.



 **HAVE IT ALL EARLY BOOKING BONUS TERMS & CONDITIONS** **Have It All Early Booking Bonus Offer** ("Early Booking Bonus Offer") is available for a limited time, on a first-come, first-served basis, to the first guests that make a new booking in connection with the Early Booking Bonus Offer while it is available. Taxes, Fees & Port Expenses are included. All values herein are in USD. Holland America Cruise Line ("HAL") may change or revoke the Offer or its parts at any time. Early Booking Bonus Offer is valued at US\$160 per day. Other exclusions and terms may apply; void where prohibited. Early Booking Bonus Offer and its parts are neither transferable, substitutable, nor redeemable for cash. Early Booking Bonus Offer is available for 1st/2nd guests only. Early Booking Bonus Offer fares available only on select departures and exclude Grand Voyages and any cruise lasting 5 days or less. **Elite Beverage Package** has a daily limit of 15 beverages, including all beverages priced at US\$15 or less and beverage service charges. The Elite Beverage Package includes wine, beer, spirits, cocktails, non-alcoholic beverages, sodas, bottled water (sparkling or still, 400ml or less), and coffee. Guests must order one beverage at a time and be 21 years+ for alcoholic beverages. Sharing of any beverage or the package is not permitted. Beverage management/HAL reserve the right to revoke the package if misused and refuse service for any reason, including service of alcoholic beverages to intoxicated guests. Package excludes beverages purchased in The Shops, from the mini-bar, through 24-hour room service, or on Half Moon Cay. **Specialty Dining** is based on cruise duration and ship type. For 6- to 9-day cruises, guests will receive one night at Pinnacle Grill, Canaletto or Tamarind. For ships without Tamarind, guests will receive one night at Pinnacle Grill or Canaletto. For 10- to 20-day cruises, guests will receive two nights: one night at Pinnacle Grill and one night at Canaletto, or Tamarind. For ships without Tamarind, guests will receive two nights: one night at Pinnacle Grill and one night at Canaletto. For 21+ day cruises (excluding Grand Voyages), guests will receive three nights: one night at Pinnacle Grill, one night at Tamarind, and one night at Canaletto. For ships without Tamarind, guests will receive three nights: two nights at Pinnacle Grill and one night at Canaletto. Offer excludes Specialty Dining Events in Pinnacle Grill such as Sel de Mer, A Taste of De Librije, and Cellar Master Dinner. Reservations and dining times will be available to pre-reserve. **Shore Excursion Credit** is based on cruise duration and is per person, not per stateroom. For 6- to 9-day cruises, eligible guests will receive US\$100 credit per person to apply toward their shore excursion purchase(s). For 10- to 20-day cruises, eligible guests will receive US\$200 credit per person to apply toward their shore excursion purchase(s). For 21+ day cruises (excluding Grand Voyages), eligible guests will receive US\$300 credit per person to apply toward their shore excursion purchase(s). Shore Excursion Credit must be used on corresponding cruise and is non-refundable. Shore Excursion Credit can neither be redeemed for cash value nor applied to a non-shore excursion item. **Premium Wi-Fi:** All onboard Internet usage is subject to Holland America Line's ("HAL's") standard policies, which may limit browsing of some sites due to network security and bandwidth usage. Applications that use high bandwidth may be blocked and offerings are subject to change with or without notice. The plan can be activated on any device, but only one device can be actively connected at a time. Upgrades are available once on board for a single day, the remaining duration of the voyage, or adding more devices. Offer applies to 1st/2nd guests in a stateroom only. **Crew Appreciation:** Receive prepaid stateroom gratuities on board. Gratuities for other services, including, but not limited to, bar, dining room, wine accounts, and spa/salon services, are not included. HAL is neither responsible nor liable for any printing errors. Promotion is based on promotion code(s) N2 and based on double occupancy. Ships' Registry: The Netherlands.



HAVE IT ALL EARLY BOOKING BONUS TERMS & CONDITIONS **Have It All Early Booking Bonus Offer** ("Early Booking Bonus Offer") is available for a limited time, on a first-come, first-served basis, to the first guests that make a new booking in connection with the Early Booking Bonus Offer while it is available. Taxes, Fees & Port Expenses are included. All values herein are in USD. Holland America Cruise Line ("HAL") may change or revoke the Offer or its parts at any time. Early Booking Bonus Offer is valued at US\$160 per day. Other exclusions and terms may apply; void where prohibited. Early Booking Bonus Offer and its parts are neither transferable, substitutable, nor redeemable for cash. Early Booking Bonus Offer is available for 1st/2nd guests only. Early Booking Bonus Offer fares available only on select departures. **Elite Beverage Package** has a daily limit of 15 beverages, including all beverages priced at US\$15 or less and beverage service charges. The Elite Beverage Package includes wine, beer, spirits, cocktails, non-alcoholic beverages, sodas, bottled water (sparkling or still, 400ml or less), and coffee. Guests must order one beverage at a time and be 21 years+ for alcoholic beverages. Sharing of any beverage or the package is not permitted. Beverage management/HAL reserve the right to revoke the package if misused and refuse service for any reason, including service of alcoholic beverages to intoxicated guests. Package excludes beverages purchased in The Shops, from the mini-bar, through 24-hour room service, or on Half Moon Cay. **Specialty Dining** is based on cruise duration and ship type. For 6- to 9-day cruises, guests will receive one night at Pinnacle Grill, Canaletto, or Tamarind. For ships without Tamarind, guests will receive one night at Pinnacle Grill or Canaletto. For 10- to 20-day cruises, guests will receive two nights: one night at Pinnacle Grill and one night at Canaletto or Tamarind. For ships without Tamarind, guests will receive two nights: one night at Pinnacle Grill and one night at Canaletto. For 21+ day cruises (excluding Grand Voyages), guests will receive three nights: one night at Pinnacle Grill, one night at Tamarind, and one night at Canaletto. For ships without Tamarind, guests will receive three nights: two nights at Pinnacle Grill and one night at Canaletto. Offer excludes Specialty Dining Events in Pinnacle Grill such as Sel de Mer, A Taste of De Librije, and Cellar Master Dinner. Reservations and dining times will be available to pre-reserve. **Shore Excursion Credit** is based on cruise duration and is per person, not per stateroom. For 6- to 9-day cruises, eligible guests will receive US\$100 credit per person to apply toward their shore excursion purchase(s). For 10- to 20-day cruises, eligible guests will receive US\$200 credit per person to apply toward their shore excursion purchase(s). For 21+ day cruises (excluding Grand Voyages), eligible guests will receive US\$300 credit per person to apply toward their shore excursion purchase(s). Shore Excursion Credit must be used on corresponding cruise and is non-refundable. Shore Excursion Credit can neither be redeemed for cash value nor applied to a non-shore excursion item. **Premium Wi-Fi:** All onboard Internet usage is subject to Holland America Line's ("HAL's") standard policies, which may limit browsing of some sites due to network security and bandwidth usage. Applications that use high bandwidth may be blocked and offerings are subject to change with or without notice. The plan can be activated on any device, but only one device can be actively connected at a time. Upgrades are available once on board for a single day, the remaining duration of the voyage, or adding more devices. Offer applies to 1st/2nd guests in a stateroom only. **Crew Appreciation:** Receive prepaid stateroom gratuities on board. Gratuities for other services, including, but not limited to, bar, dining room, wine accounts, and spa/salon services, are not included. HAL is neither responsible nor liable for any printing errors. Promotion is based on promotion code(s) N2 and based on double occupancy. To be read in conjunction with the Holland America Line Cruise Contract at HollandAmerica.com/en_US/legal-privacy-australia/cruise-contract.html, by which guests will be bound. Whilst all information is correct at time of publication, offers are subject to change or withdrawal. Carnival plc trading as Carnival Australia ABN 23 107 998 443 as agent for Holland America Line. Ships' Registry: The Netherlands.



HOLLAND AMERICA LINE
NAVIGATOR

**DOWNLOAD THE
NAVIGATOR® APP**

The **Holland America Line Navigator® App** is your indispensable tool for cruise planning, essential updates, embarkation, managing your onboard experience, and booking shore excursions.